

Al Barami Building Materials & Trading LLC

LEADING THE WAY

www.albaramigroup.com

About Us

Al Barami Building Materials & Trading LLC (BBM), a well established name, which has asserted its prominent presence in the field of construction and contracting industry in Sultanate of Oman for more than three decades.

BBM caters to a wide range of bulk requirements of the Construction Industry in Oman. The products that include Cement (Portland & Sulphate resistant), Steel, BRC Mesh, Plywood, Timber, etc.

Road Marking Division carrying out Road Marking Contracts, the division is also a leading supplier of 'Road Furniture' including Guard rails, Metallic and Ceramic Road Studs, Signage and Road Marking Paints (Thermoplastic Paints, Solvent Based Paints, Waterborne Paints, Epoxy Top Coat, Kerbstone Paints, MMA – Cold Plastic Paints)

With an impeccable track record, BBM has established itself as a leader in this business area. Manned by highly experienced and competent staff and backed by State-of-the-Art Machinery and Equipment. This division is known for its total commitment to qualify and timely completion of all projects.

Vision

Our vision is to anticipate customer needs, devise innovative ways to deliver quality, cost-effective products, prompt services, and viable solutions. Thus become the channel of choice for our customers by adding value and efficiency.

Corporate Values

■ Commitment

Commitment is much more than a promise to do something. Commitment is a state of mind. It is a key mental component that is vital part of every team member in our company.

■ Performance

Our company is focused on being the best in our industry at providing Tier 1 customer service. This includes performing at the highest levels on every project. Our company is led by some of the most seasoned professionals in this industry. Performing at a high level starts at the top and it ends with every single individual on every project.

■ Quality

Quality assurance and delivering a quality project is essential to the success of every project we deliver.



Road Marking Division

The Road Marking Division is a major player in the region, having successfully completed innumerable road marking projects in the Sultanate of Oman.

This division has over several years of experience and has constantly maintained its reputation for quality, workmanship and timely completion of projects.

Equipped with state of art machinery and highly experienced technical work force to meet any challenges in the field of road marking even at difficult terrains.

The division continues to maintain its status as a market leader in a highly competitive line of business without compromise on Quality. There is continuous effort to improve the road marking system and technological breakthroughs include adding reflectivity, increasing longevity and lowering installation costs.

Supplied Products/Services:

- **Road Marking & Maintenance**

Thermoplastic Application, Cold Paint Application, Epoxy Top Coat etc.)

- **Runways Marking & Maintenance**

(Thermoplastic Application & Cold Paint Application.)

- **Supply & Installation of Kerbstone Marking**

- **Supply & Installation of Sign Boards**

- **Supply & Installation of Metallic & Ceramic Studs**

- **Supply & Installation of Guard Rails**

- **High Friction Surfacing**

- **Asphalt Crack Repair**

- **Joint Sealant**

- **Asphalt Surface Restoring Service by using Micro surfacing Slurry Seals**

- **Removal of Existing Marking**

(By Water Blasting, Sand Blasting & Grinding method)

- **Cleaning of Existing Road Marking Lines.**

- **Supply of all road Furniture's.**

“High way safety is our goal, Quality is our way”

Road Marking and Maintenance

Road markings are crucial in keeping highways, drivers and passengers safe. Al Barami has the experience and expertise to provide unparalleled services in road marking for various projects across the Sultanate of Oman. Our team consist of highly skilled professionals who can handle projects of all sizes and complexities with the fastest turnaround time.

Equipped with the latest technology and state-of-the-art equipment, we have developed and implemented road marking solutions for various commercial, government, and private clients across Sultanate of Oman.

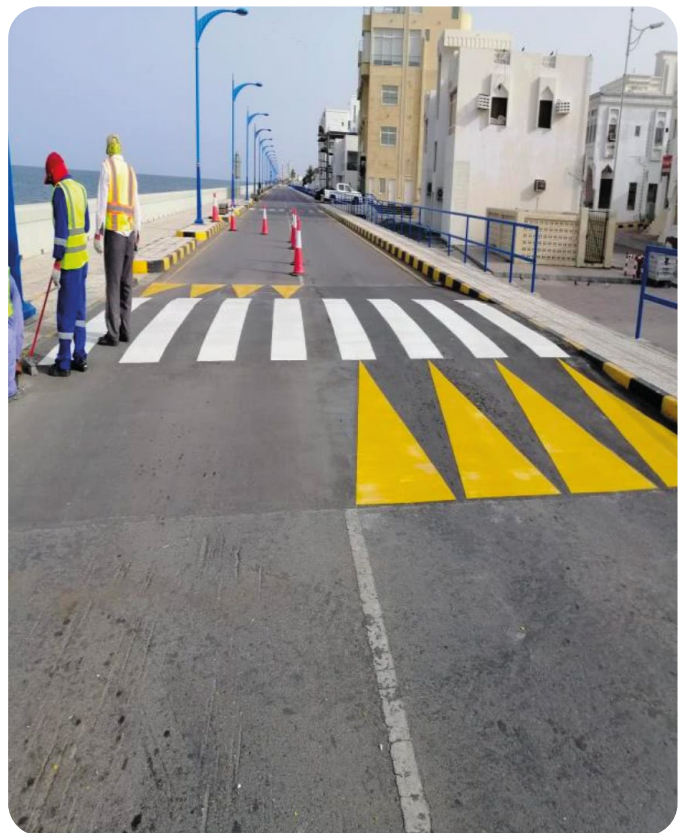
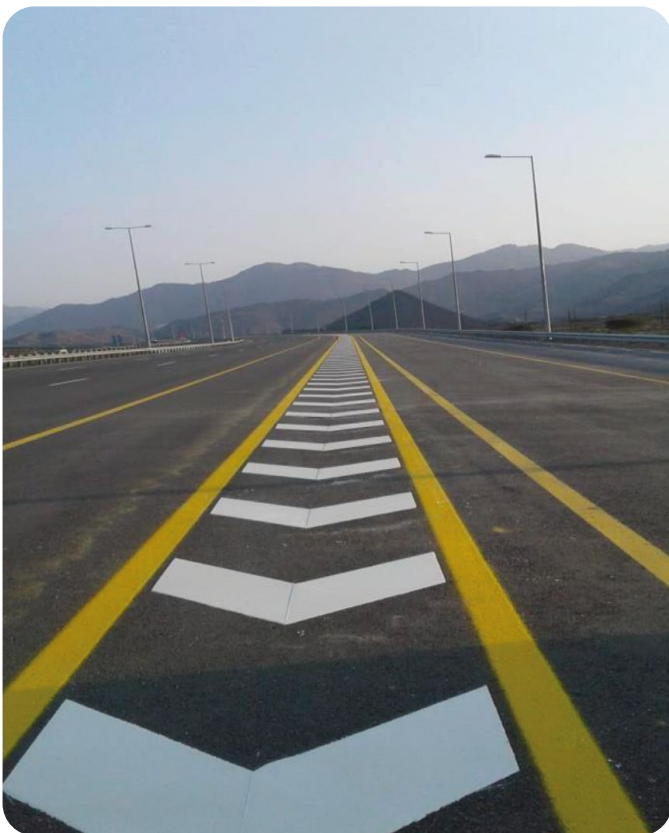
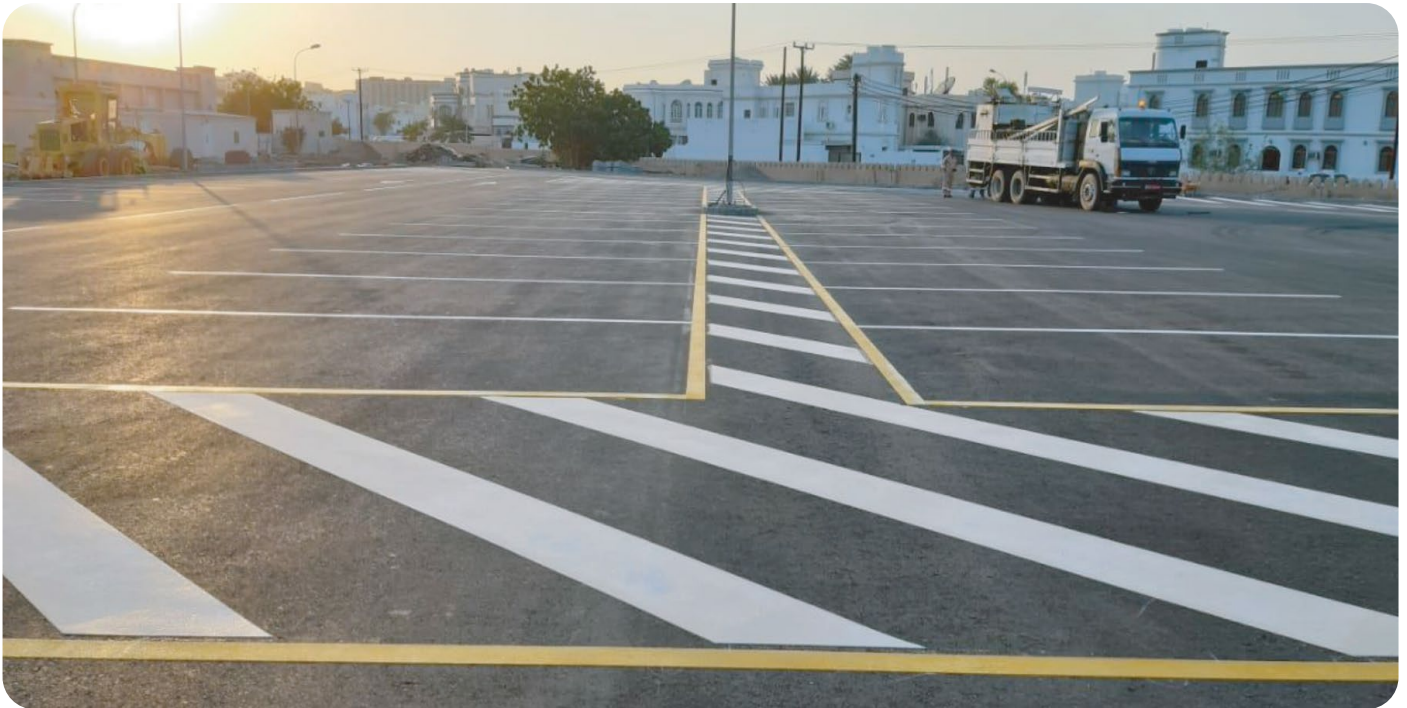
Our Road Marking Services consist of below

- **Thermoplastic Road Marking**

Thermoplastic road marking is usually carried on asphalt surfaces. Composed of synthetic resin and premix glass beads, thermoplastic road markings have been a popular and superior choice for road safety.

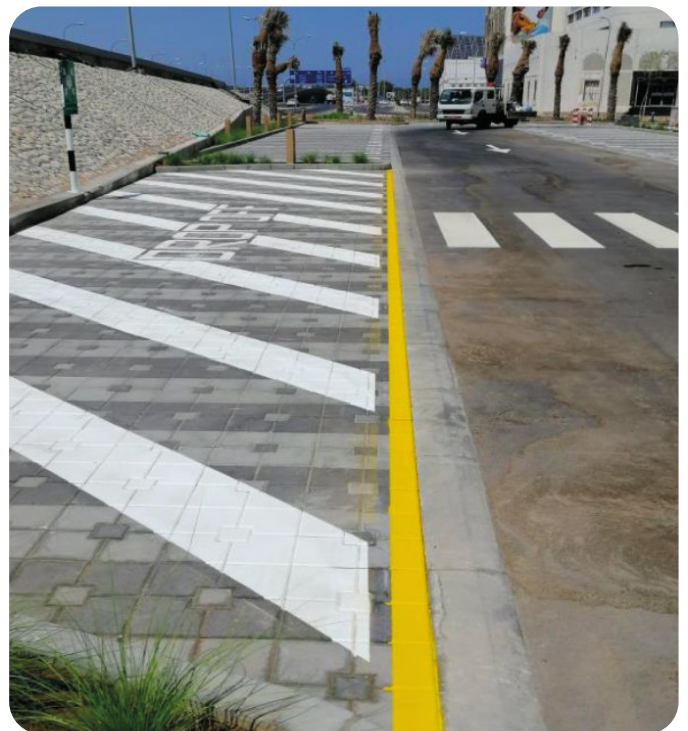
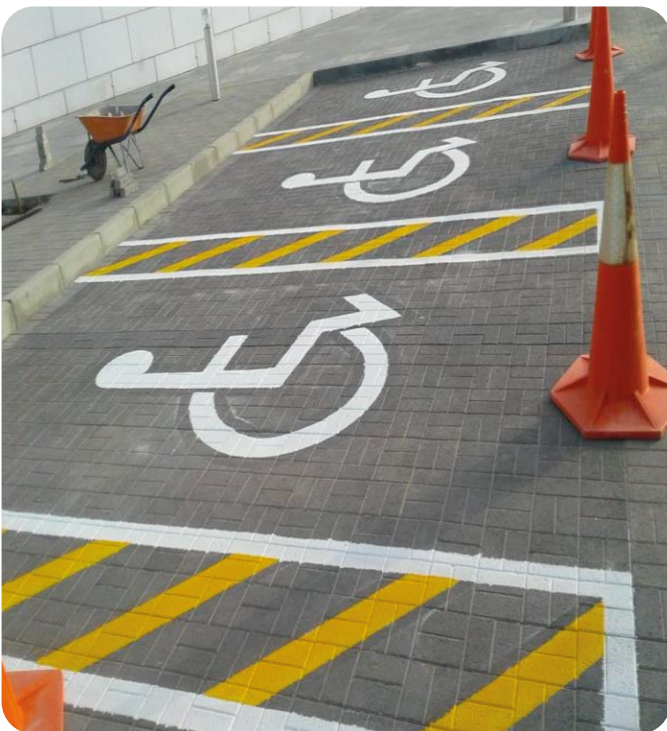
The strength, durability and long lifespan of thermoplastic road marking make it a great investment. With its excellent reflection properties, thermoplastic markings provide ultra-high visibility even at night or in bad weather conditions, catching drivers' attention almost instantly. We use white and yellow thermoplastic paint and glass beads for the road marking.





● Solvent / Water Borne Acrylic Marking

We specialize in offering Solvent / Water Borne Acrylic road marking services with precision and accuracy. Engineered for superior performance in demanding applications, Solvent / Water Borne Acrylic paint is an ideal choice for applying road marking on asphalt, concrete, and interlocking tile surfaces.



● MMA Cold Plastic Marking

Cold plastic is an exceptionally fast-curing and long-lasting product used for road marking. Primarily designed for highways. Cold Plastic marking, with its superior reflectivity and thermal stability, is especially suitable for applications that demand high traffic loads occur and increased visibility.



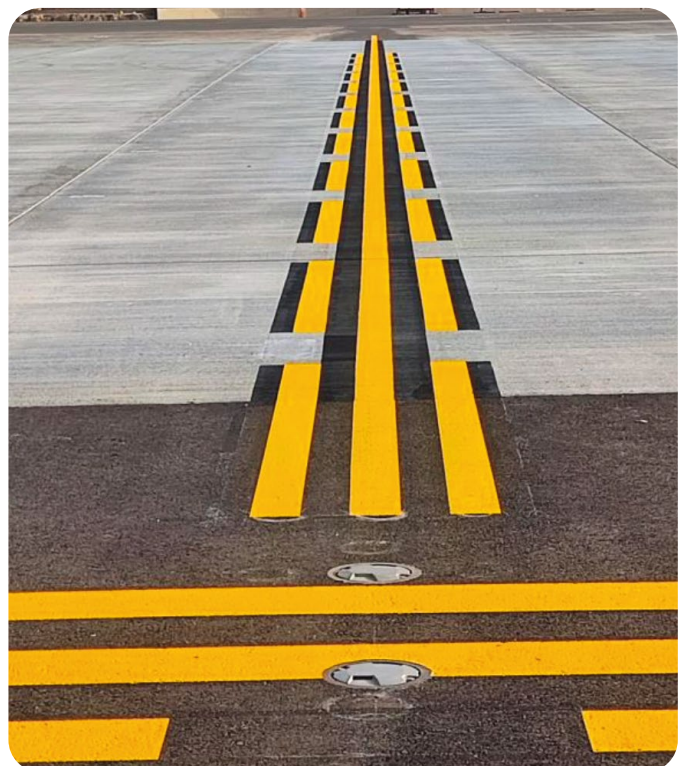
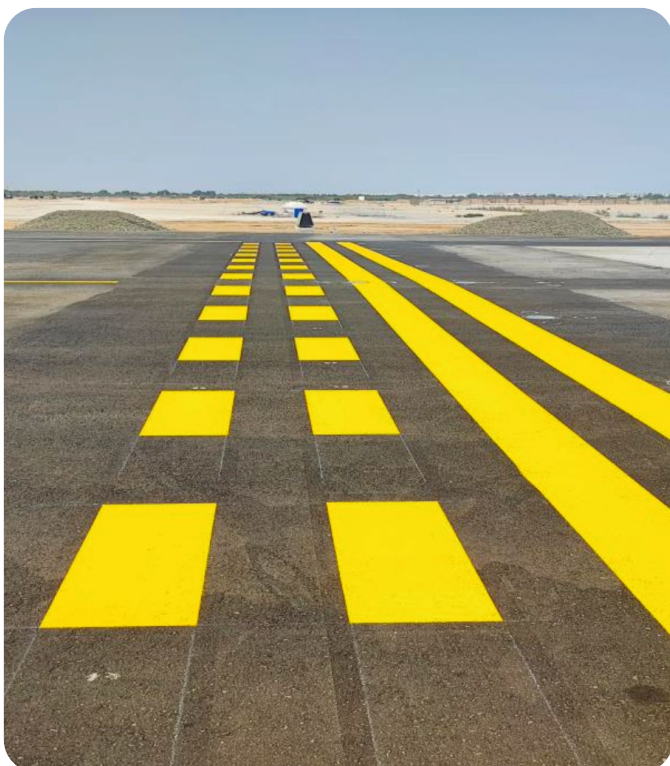
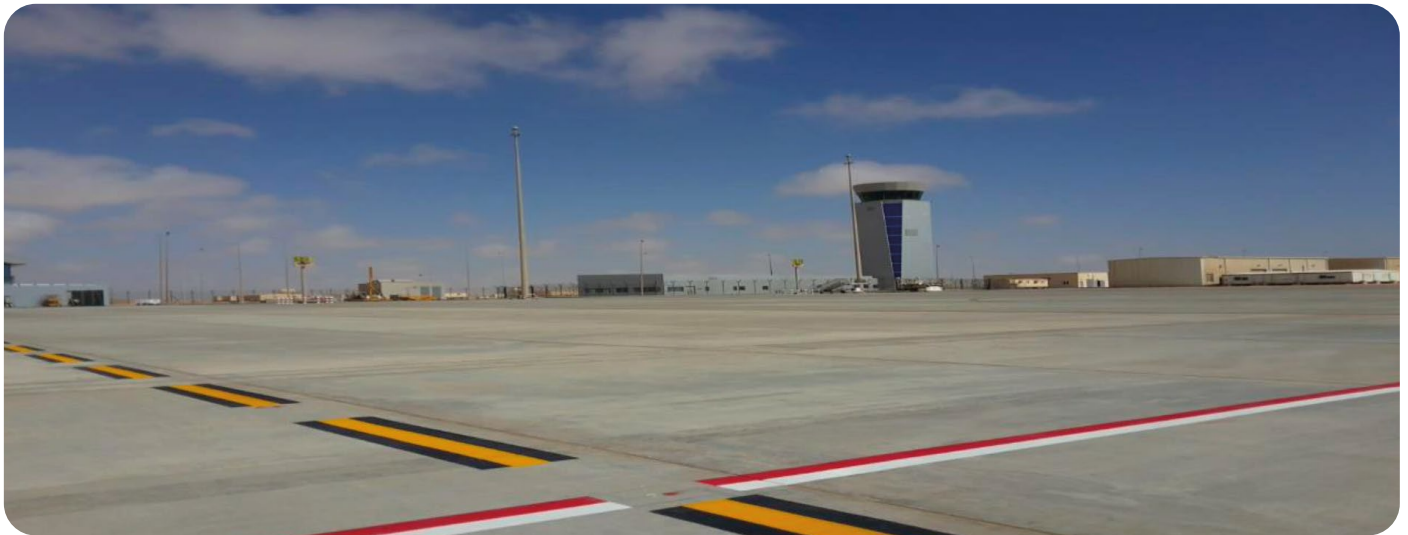
● Epoxy Top Coat Marking

It is applied on the top of epoxy surface, Ideal for clearly defining walkways from working areas in factories, warehouses and other highly trafficked industrial spaces.



Runway Marking and Maintenance

Airport and runway markings assist the ground vehicle and aircraft during taxi, takeoff and landing for safe operations. We understand the importance of line markings in avoiding incursions on the runway and maintaining order in an airport environment. That is why we use Acrylic Water Based cold paint on the runway, taxiway, and aprons to create a smooth landing and takeoff without interfering with the mechanical functions of the aircraft. Our team uses the very best in technology and products to ensure that your line marking is accurate and complies with all the health and safety regulations and legal requirements.





Supply & Installation of Kerb Stone Marking

We carry out Kerb stone marking using special water repellent, quick drying paint based on modified acrylic resin containing Titanium Dioxide and other high grade colour fast pigments. The specially formulated product is resistant to abrasion and chemicals, and ideal as Marking Paint on Kerbstone and concrete surfaces.



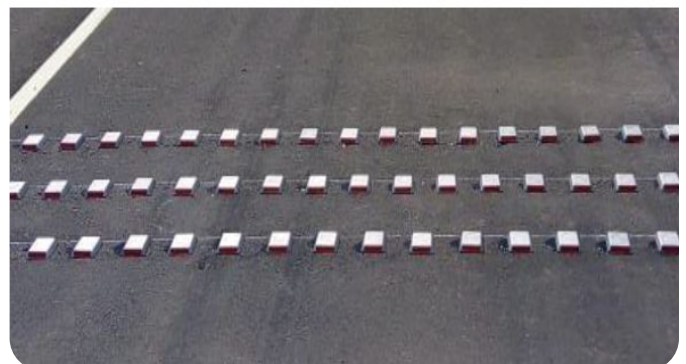
Supply & Installation of Sign Boards

We carry out Kerb stone marking using special water repellent, quick drying paint based on modified acrylic resin containing Titanium Dioxide and other high grade colour fast pigments. The specially formulated product is resistant to abrasion and chemicals, and ideal as Marking Paint on Kerbstone and concrete surfaces.



Supply & Installation of Metallic & Ceramic Studs

Road studs can be reflective, non-reflective or solar-powered and can be surface mounted or milled. Al Barami team consists of trained and experienced professionals who are well-Versed in handling all road studs installation needs.



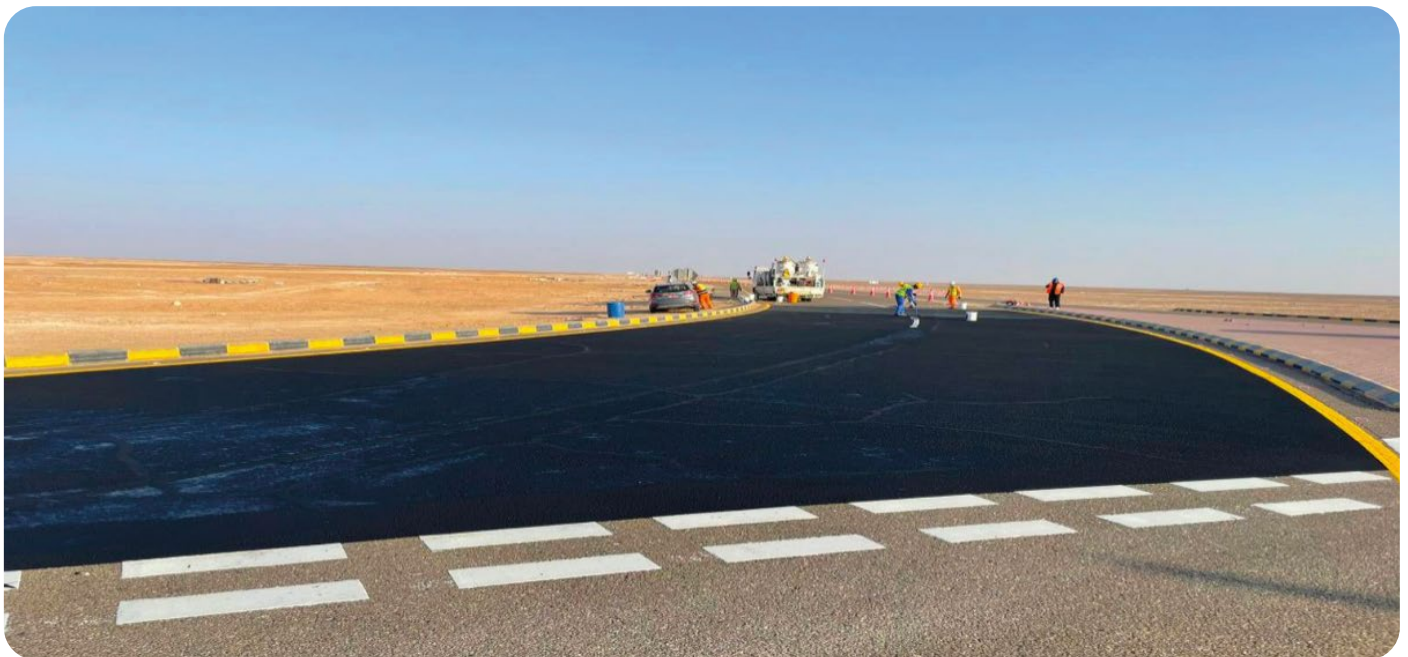
Supply & Installation of Guard Rails

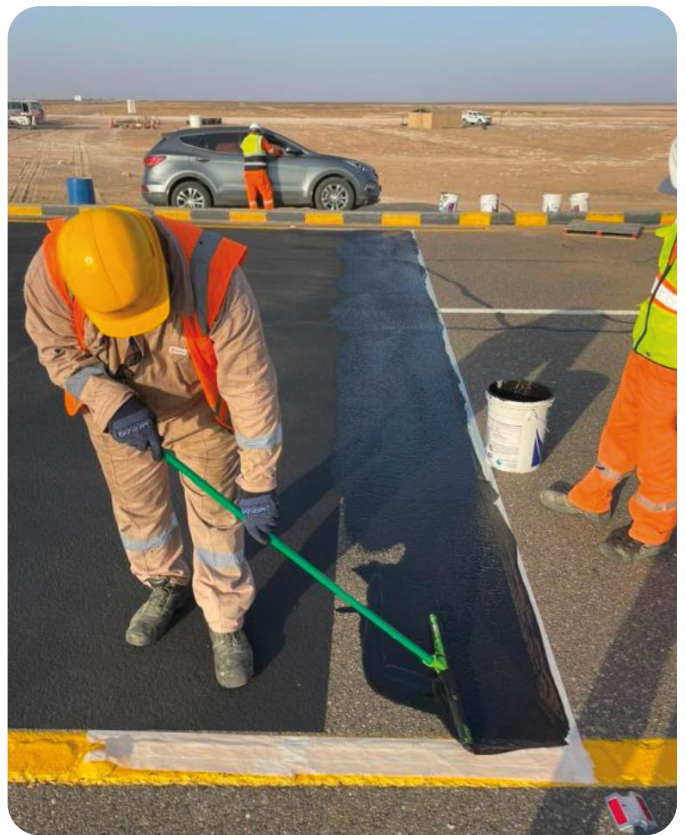
Guard Rails are fixed on the side of the roads especially on curves and slopes for preventing vehicles from riding out from roads. Elements of Guard rails are Guard rail beam, Posts, Terminal and Accessories.



High Friction Surfacing and Surface Protection

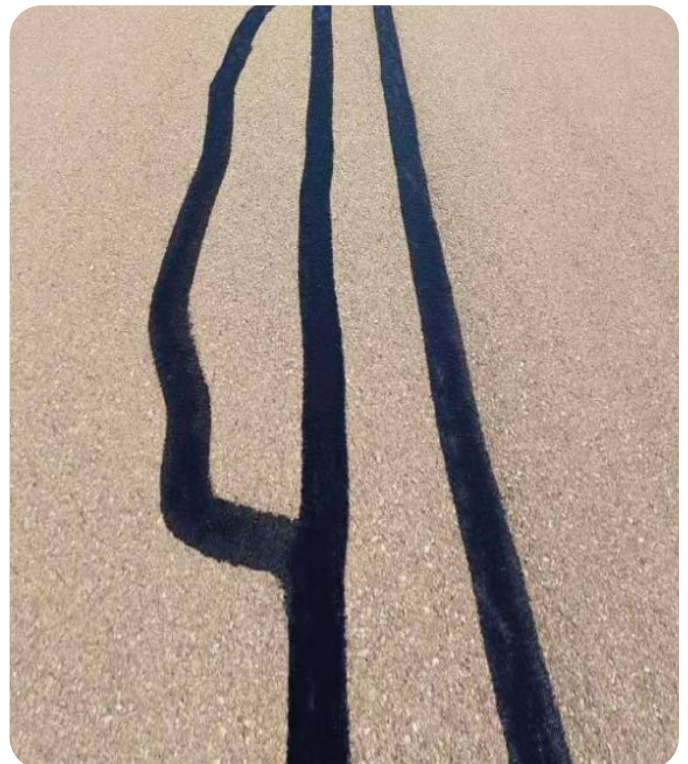
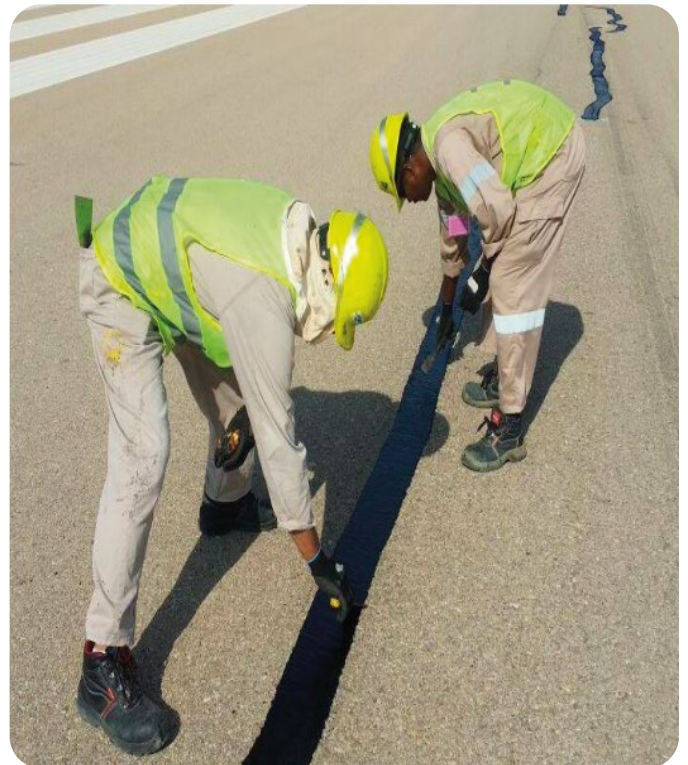
High Friction Surfacing carried out using an Asphalt Emulsion material with engineered chemistry and fine crushed aggregates available in a variety of configurations. Use of crushed and graded aggregate particles provides high friction, longer wear and tear and extended protection. It has ability to withstand heavy wheel loads and shear stresses including on Runways heavy stress and shear forces from landing impact. It is carried out on the Runways, Roundabouts, slopes etc.





Asphalt Crack Repair

We carry out crack repair/sealing for crack on asphalt & concrete surfaces. Using specialized material either above or into working cracks using unique configuration to prevent the intrusion of water and debris into the cracks.



Joint Sealant Works

We carry out joint sealant works using single component hot applied, fuel & oil resistant sealant designed for use in all types of concrete pavement joints.



Asphalt Surface Restoring Service by using Micro surfacing Slurry Seals

We also carry out asphalt surface restoration using Micro surfacing treatment designed to extend the life of asphalt pavements in good condition by providing skid resistance, restricting moisture intrusion, protecting the structure from further oxidation and raveling and restoring a uniform black appearance. It is the most economical choice when leveling is required.

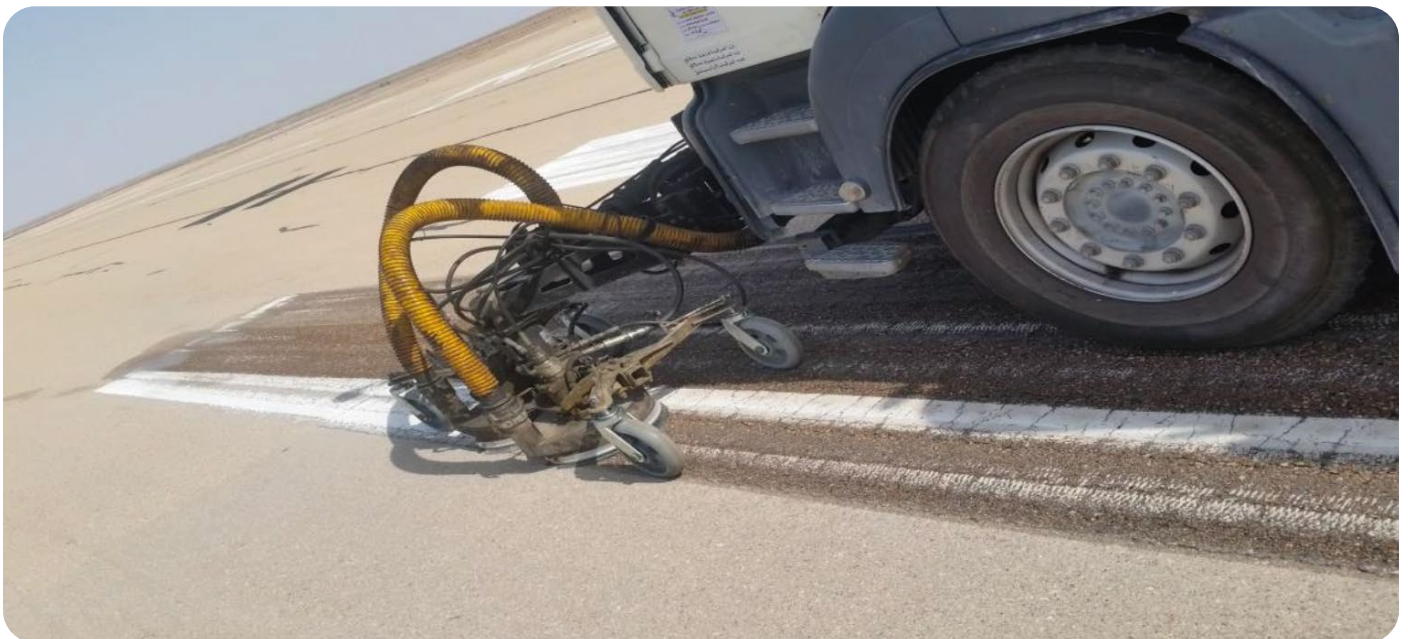


Removal of Existing Markings

The removal of existing pavement markings is required for a number of reasons. Few of the most common are when traffic patterns need to be changed to accommodate work zones, and when markings are removed to install additional travel lanes or turn lanes where developments or retail stores are built. After multiple reapplications, the marking gets thicker and need to be removed. We usually follow the three methods of removal as below:

- **Water Blasting Method**

Water Blasting uses high pressure water (up to 40,000 PSI) to remove the material and a vacuum recovery system sucks the loose material and leaves the road surface clean & almost dry. It is a safe, environmentally friendly removal process.



● Sand Blasting Method

Sand Blasting uses an abrasive media which is accelerated through a blasting nozzle by means of compressed air. The high pressure removes the line marking and smoothens the surface.



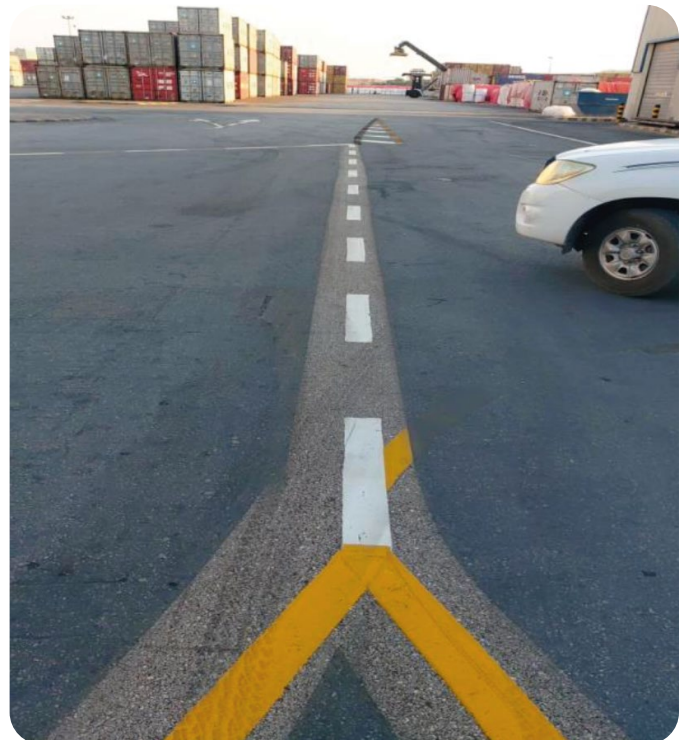
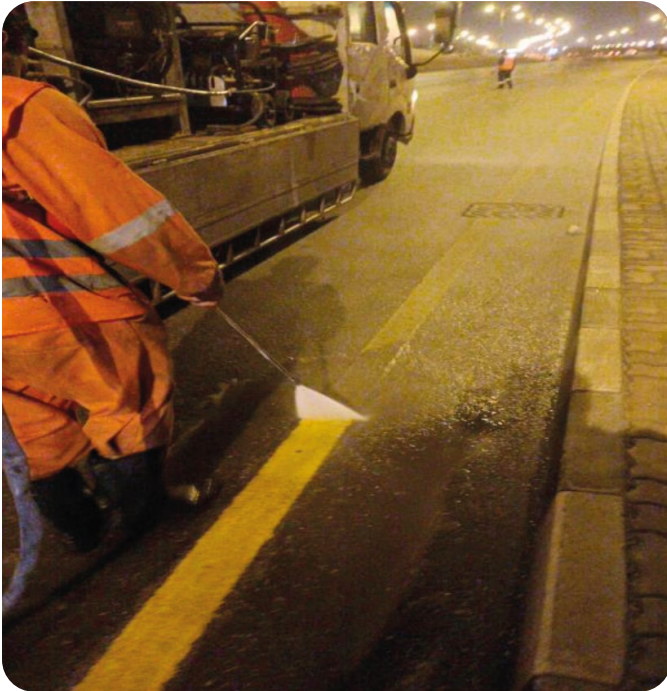
● Grinding Method

Grinder is the simplest form of removal. These machines are easily maneuvered and can remove both small and large quantities. This one-person operation is most commonly used in confined spaces with many vehicle movements.



Cleaning of Existing Road Marking Lines

We provide services of cleaning of existing marking using high pressure Water Jetting Machine. Water Jetting Machine can clean road line mark and other obstinate dirt on road pavement rapidly without damaging road pavement.



Few Prestigious Clients in Oman

- Ministry of Transport & Communication
- Ministry of Diwan
- Ministry of Defense
- Royal Office
- Oman Airports
- Galfar Engineering & Contracting Co. LLC
- Strabag (Oman) LLC
- Abu Hatim Co. LLC
- Carillion Alawi LLC
- Al Amjad Const. and Engg. & Services
- Sarooj Construction Company LLC
- Consolidated Contracting Co. (Oman) LLC
- Al Naba' a Infrastructure LLC
- Bahwan Engineering Co. LLC
- Al Turki Enterprises LLC
- Oman Gulf LLC
- Dhofar Municipality
- Larsen & Toubro Electromech LLC
- Oman Engineering Co. LLC
- Al Adrak Trading & Contg. LLC
- OCTAL SAOC FZC
- Oman Building Contracting & Co. LLC
- Khimji Ramdas Construction LLC
- BR-Oman Trading & Cont. SAOG
- Anwar Fahud Projects LLC
- Hi-Technical General Trad. Cont. LLC
- Asala of Middle East
- Al Nahdha Al Omaniah Co LLC
- Fahud Towers Trading LLC
- Al Thabat Holding LLC
- Qurum Stone Development LLC
- Al Abraj Consulting Engineering
- Suhool Hamra Al Darou Co.
- Worly Parsons Group
- Najed Al Ahliya
- Al Tasnim Enterprises LLC
- Skyline International LLC
- Nagarjuna Construction Co. Int'l LLC
- STFA HLG JV
- Douglas OHI
- Al Hajiry Trading LLC
- OPAL Global Trading
- Al Hashemi & Al Rawas Trad. & Cont. Co.
- Dawood Contracting LLC
- The Five Elements
- Rimal Global Technical Services LLC

Road Marking Equipment's

S/N	NAME OF MACHINE	VEHICLE REG. NO.	TYPE	MAX. LINE WIDTH	REMARKS
1	GRACO Road Pak (Mounted on 1 Mitsubishi)	8644 ML	Cold Paint	1000mm	Self-Propelled (Automatic Function)
2	GRACO Line Lazer 3900 (Small Machine)	8644 ML	Cold Paint	300mm	Self-Propelled
3	Hofmann H500 (Mounted on Man Truck)	4966 MA	Thermoplastic	300mm	Self-Propelled (Automatic Function)
4	Springwood (Mounted on Mitsubishi Center)	9412 MA	Thermoplastic	300mm	Self-Propelled
5	Spray way M/C. (Mounted on Mitsubishi. Center)	1433 MR	Thermoplastic	300mm	Self-Propelled (Automatic Function)
6	Hofmann H500 (Mounted on Man Truck)	6985 WB	Thermoplastic	300mm	Self-Propelled (Automatic Function)
7	Boiler Sets (Mounted on Mercedes Truck)	2906 AK	Thermoplastic		10 Ton Vehicle
8	Boiler Sets (Mounted on Hino Truck)	9531 WB	Thermoplastic		07 Ton Vehicle
9	Boiler Sets (Mounted on TATA Truck)	9742 YM	Thermoplastic		13 Ton Vehicle
10	Boiler Sets (Mounted on Hino Truck)	9517 MK	Thermoplastic		03 Ton Vehicle
11	Boiler Sets (Mounted on TATA Truck)	4571 HK	Thermoplastic		10 Ton Vehicle
12	Pick up , SUV's & Saloon Cars		Utility Vehicles		09 Nos.





Certified By:



**Phone:****Sales Office :**

Tel: +968 24 59 3250 Fax : +968 24 59 4659

HeadOffice :

Tel : +968 24 58 3900 Fax : +968 24 58 3902

**Email:**

bbmsales@albaramigroup.com

bghcmct@omantel.net.om

**Address:**

Al Barami Building Materials & Trading Co. LLC
A member of 'Al Barami Group of Companies'

AHMED MOHD. HUSSEIN

DEPARTMENT HEAD

CONTACT

☎ +968 99247729

✉ ahmedmohammed@albaramigroup.com

XAVIER ALEX

OFFICE & PLANNING
ACTIVITIES

CONTACT

☎ +968 99851044

✉ xavieralex@albaramigroup.com

**SUBHISH KUNNATH
RAMACHANDRAN**

SR. SUPERVISOR

CONTACT

☎ +968 99105482

✉ subhishk@albaramigroup.com